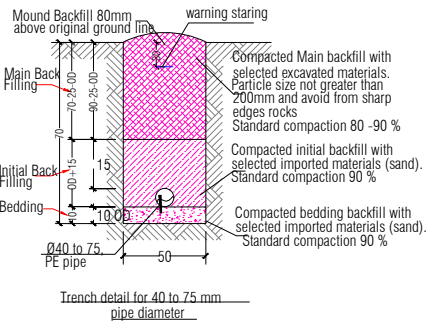


Larkhab Village Pipe Scheme Project Site Plan

Color Coding Legend Pipe: Diameter (mm)	
—	<= 40.0
—	<= 50.0
—	<= 63.0
—	<= 75.0
—	Other

Notes:

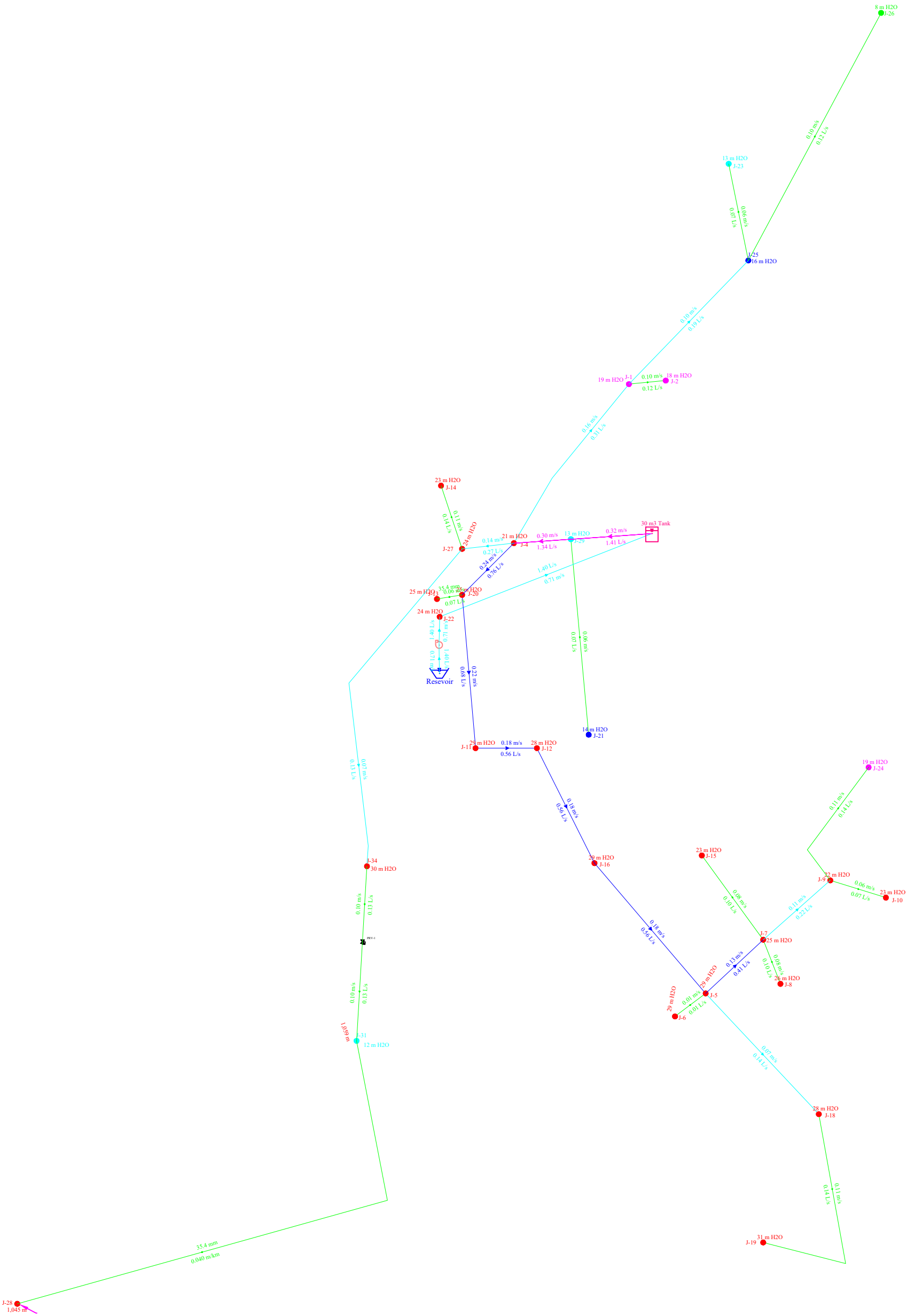
- 1- Length of all pipe are in (m)
- 2- Out diameter of all pipe are in (mm)
- 3- Pressure in all joints are in (m H2O)
- 4- Flow in all joints are (l/sec)
- 5- Velocity in all pipe are (m/sec)
- 7- Total length of pipe = 2232 m
- 8- All pipes should taken HDPE 100, PN 10.
- 9- All gate valve should be VAG or equivalent.
- 10- Construction of 30 m3 RCC Ground Reservoir.
- 11- Number of family = 112
- 12- Total Number of Stand Tap = 55




LOCATION OF SOURCE AND RESERVOIR

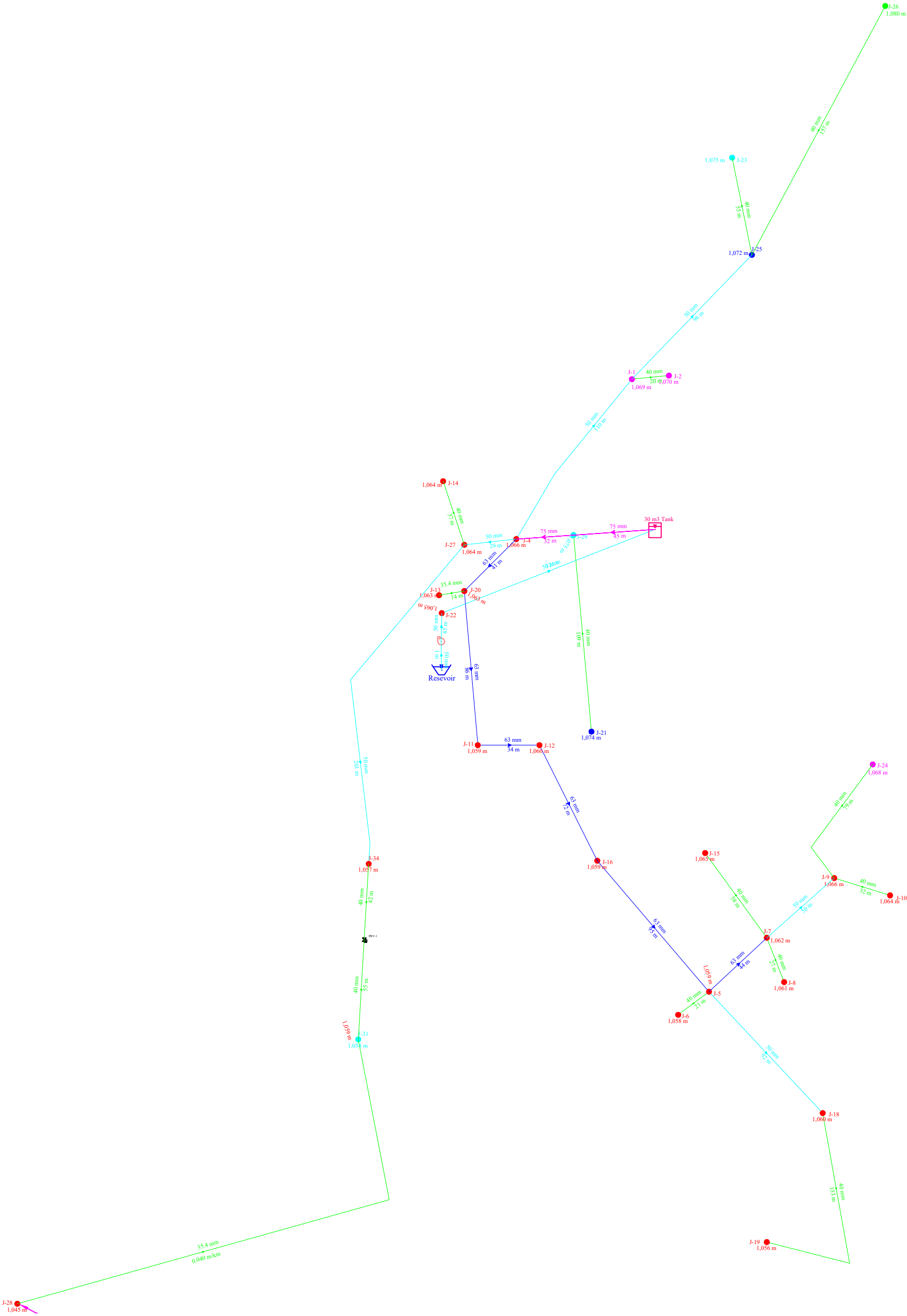
NAME	EAST	NORTH	ELEVATION
WELL	485085.47	3958323.80	1065.48
Tank	485184.24	3958360.79	1086.91

	SURVEYED BY	Engineering Team	CHECKED BY	Engineering Team	SCALE			PROVINCE	Baghlan	PROJECT NAME	Solar Power Water Supply Pipe scheme
	DESIGNED BY	Sayed Hamidullah Hashemi	REVIEWED BY	Engineering Team	DATE	28-08-2025		DISTRICT	Doshi		
	DRAWN BY	EngineeringTeam	APPROVED BY	Engineering Team	DRAWING NO.			VILLAGE	Larkhab	DRAWING TITLE	Phase-1





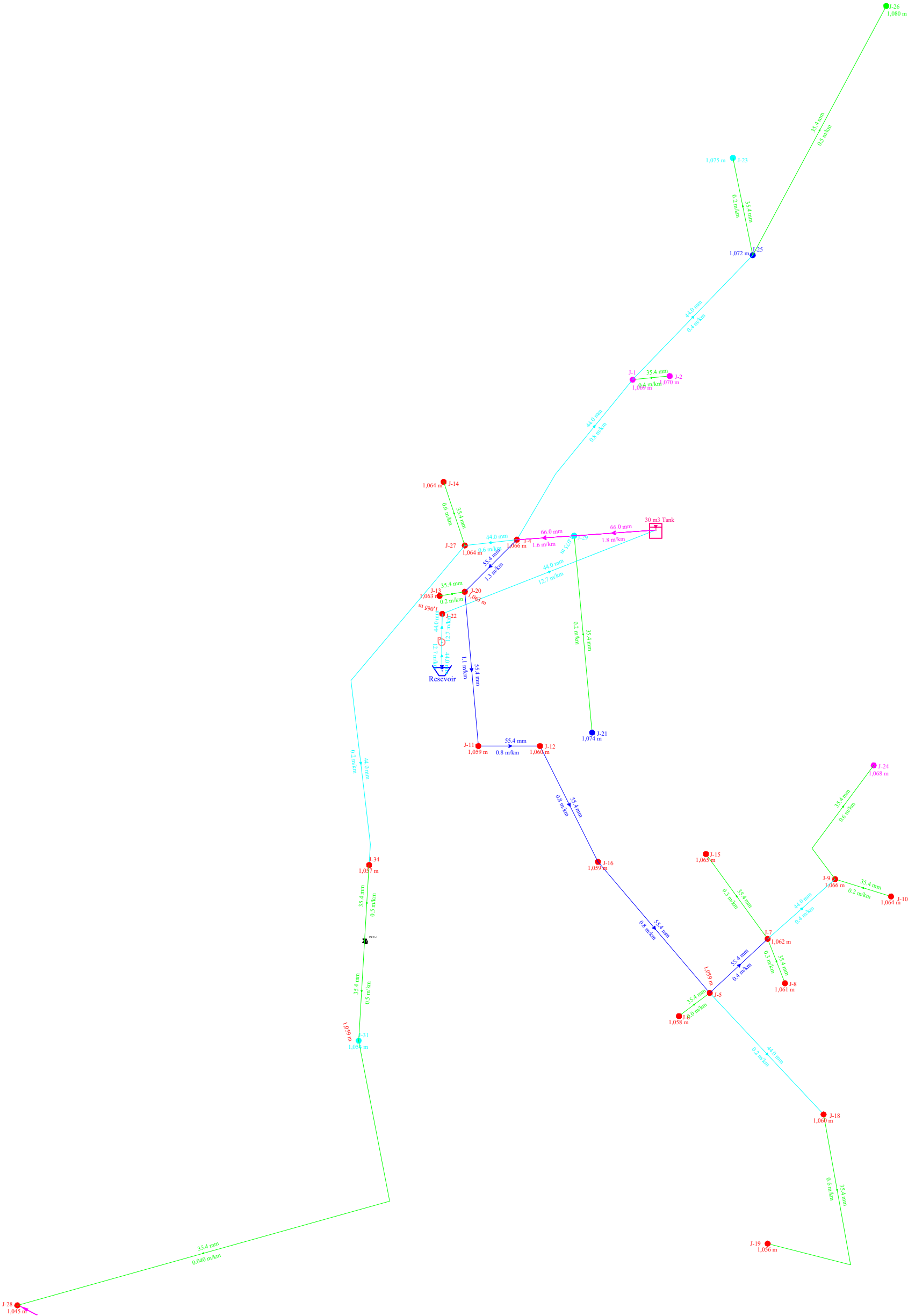
Node ID,flow in (L/s),vilocity in (m/s) and Pressure in(mH₂O)

	SURVEYED BY	Engineering Team	CHECKED BY	Engineering Team	SCALE		<div>SHEET NO.<div>24</div></div>	PROVINCE	Baghlan	PROJECT NAME		Solar Power Water Supply Pipe scheme
	DESIGNED BY	Sayed Hamidullah Hashemi	REVIEWED BY	Engineering Team	DATE	28-08-2025		DISTRICT	Doshi	DRAWING TITLE		Phase-1
	DRAWN BY	EngineeringTeam	APPROVED BY	Engineering Team	DRAWING NO.			VILLAGE	Larkhab			




Node ID,Length in (m),dia in (mm) and Elevation in(m)

	SURVEYED BY	Engineering Team	CHECKED BY	Engineering Team	SCALE		SHEET NO. 	PROVINCE	Baghlan	PROJECT NAME	Solar Power Water Supply Pipe scheme
	DESIGNED BY	Sayed Hamidullah Hashemi	REVIEWED BY	Engineering Team	DATE	28-08-2025		DISTRICT	Doshi	DRAWING TITLE	
	DRAWN BY	EngineeringTeam	APPROVED BY	Engineering Team	DRAWING NO.			VILLAGE	Larkhab		



Node ID,Headloss (m/km), Inner dia in (mm) and Elevation(m)

	SURVEYED BY	Engineering Team	CHECKED BY	Engineering Team	SCALE		<div>SHEET NO<div>44</div></div>	PROVINCE	Baghlan	PROJECT NAME	Solar Power Water Supply Pipe scheme
	DESIGNED BY	Sayed Hamidullah Hashemi	REVIEWED BY	Engineering Team	DATE	28-08-2025		DISTRICT	Doshi	DRAWING TITLE	
	DRAWN BY	EngineeringTeam	APPROVED BY	Engineering Team	DRAWING NO.			VILLAGE	Larkhab		Phase-1



PROJECT NAME

Construction of Water supply System With
Reservoir and Solar System in Baghlan Doshi district Larkhab yakatoot Village

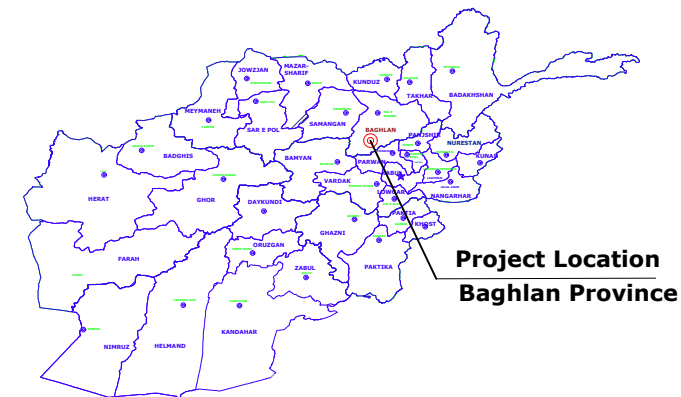
DESIGN DRAWINGS

Water Supply Network Project at Baghlan Doshi District Larkhab yakatoot Village

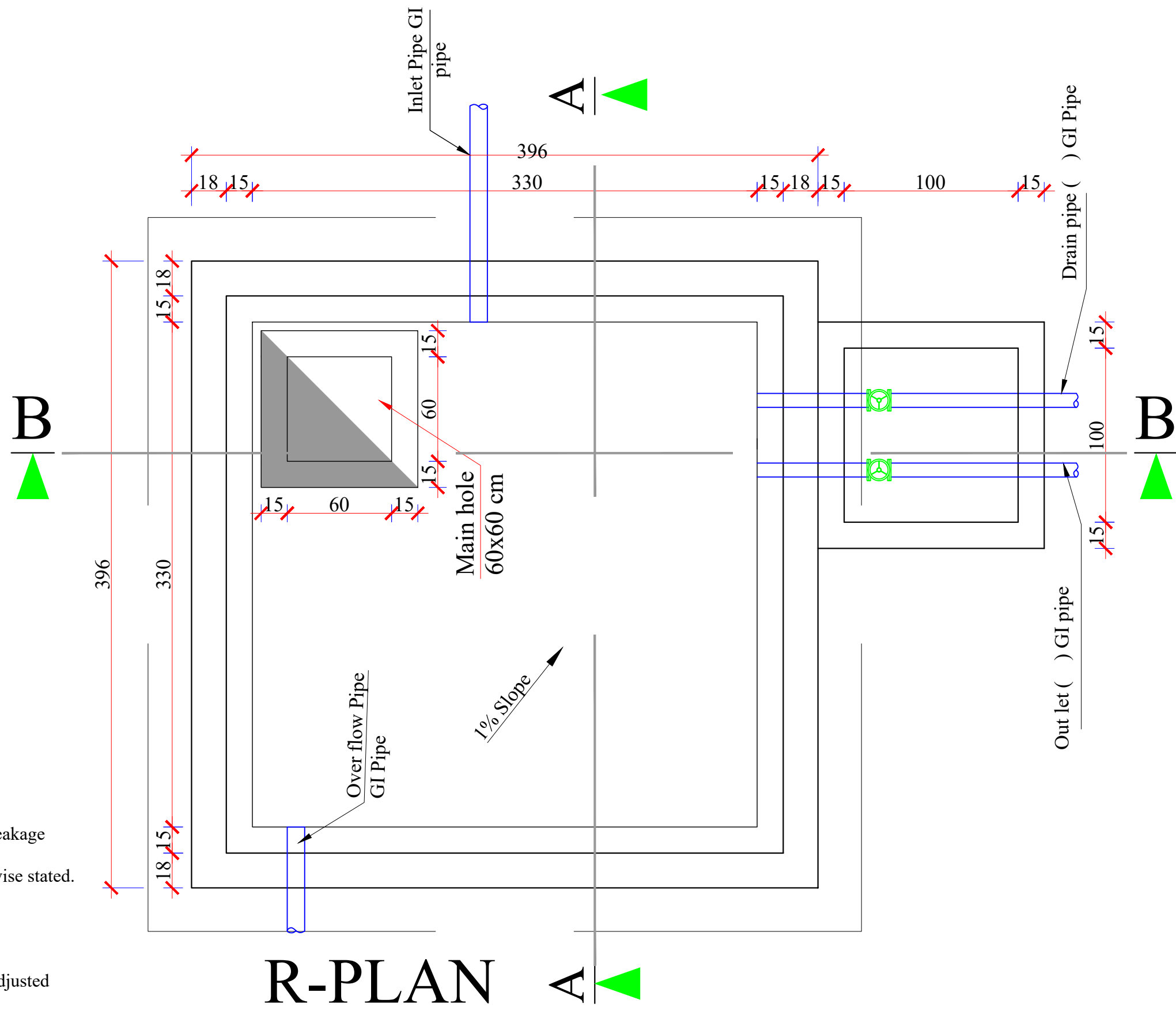
Hydraulic Design, Reservoir Design Pump, solar Design and Estimation

Brief Information

No. of Families: 112
New Well with depth = 80m
Static Water Level = 20m
Total Dynamic Head = 86m
No. of Solar panels (watt) = 4860 Watt
Total Length of network = 2440 m
Number of Gravity water Reservoir = 1 - 30 M3


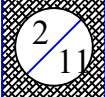


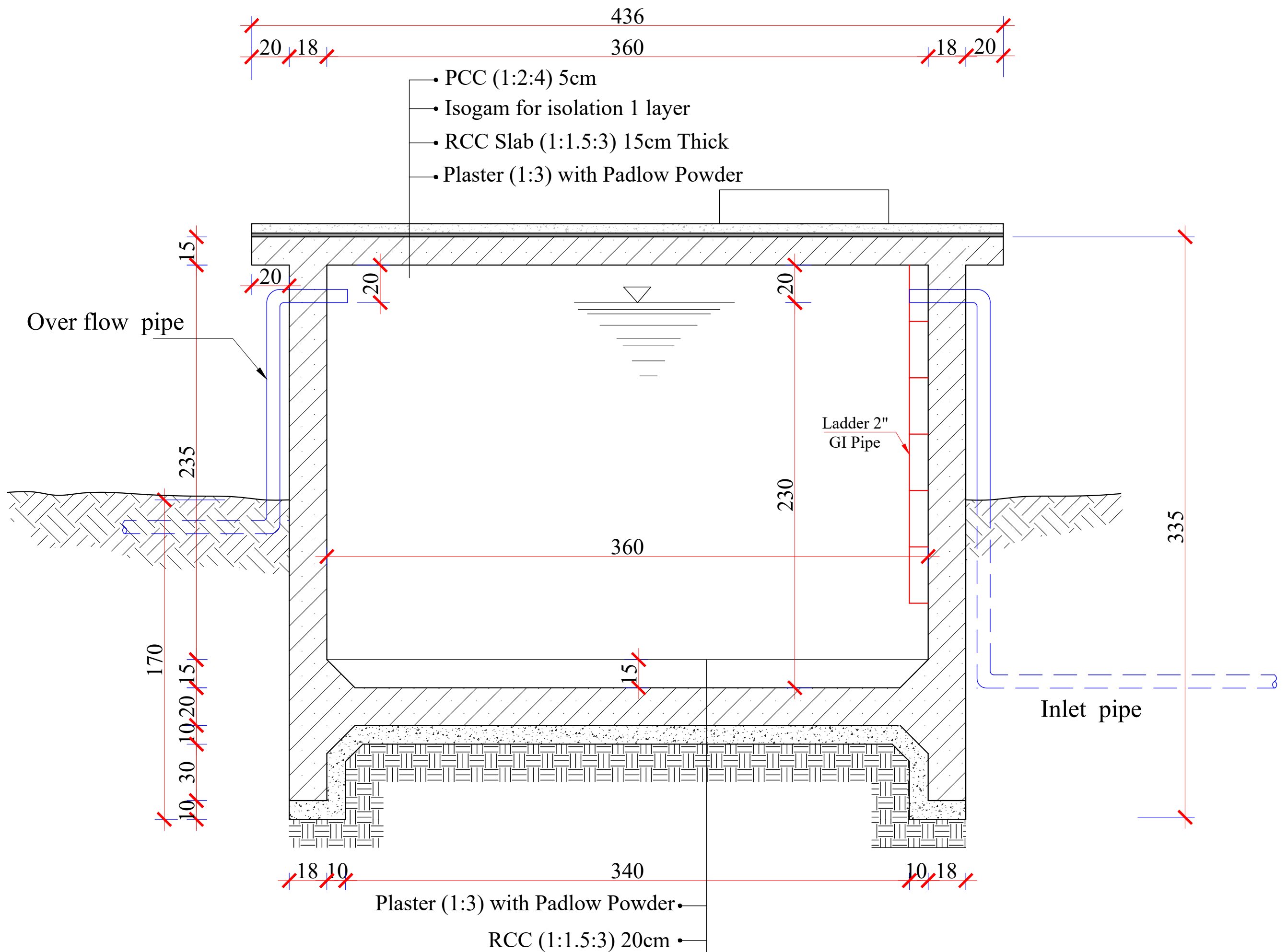
SUBMISSION DATE : Aug - 2025



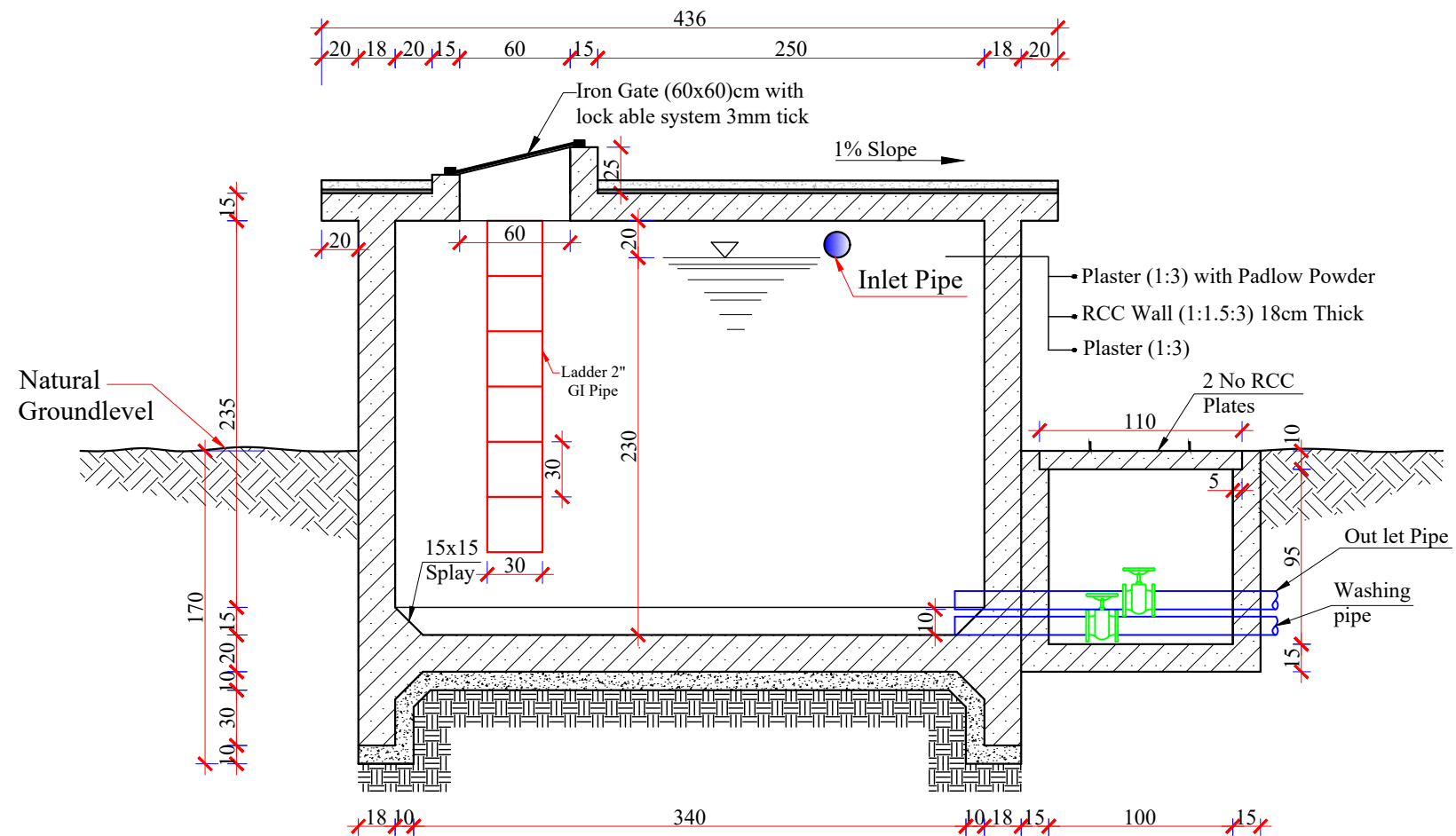
Note:

- 1- All dimensions are in cm unless otherwise stated.
- 2- During RCC work vibrator must be used to avoid water leakage from reservoir.
- 3- All PCC works should be with 1:2:4 mortar unless otherwise stated.
- 4- All RCC works should be with 1:1.5:3 mortar.
- 5- Isolation material is glass wool.
- 7- Curing must be continued upto 28 days.
- 8- Clear and Clean water must be used every where.
- 9- The inlet, outlet, overflow and washing pipes should be adjusted according to site condition.

	SURVEYED BY	Engineering Team	CHECKED BY	Engineering Team	SCALE		SHEET NO. 	PROVINCE	Baghlan	PROJECT NAME 30 Cubic meter RCC Water Reservoir-1
	DESIGNED BY	Sayed Hamidullah Hashemi	REVIEWED BY	Engineering Team	DATE	28-08-2025		DISTRICT	Doshi	
	DRAWN BY	EngineeringTeam	APPROVED BY	Engineering Team	DRAWING NO.			VILLAGE	Larkhab	DRAWING TITLE Water Tank Plan



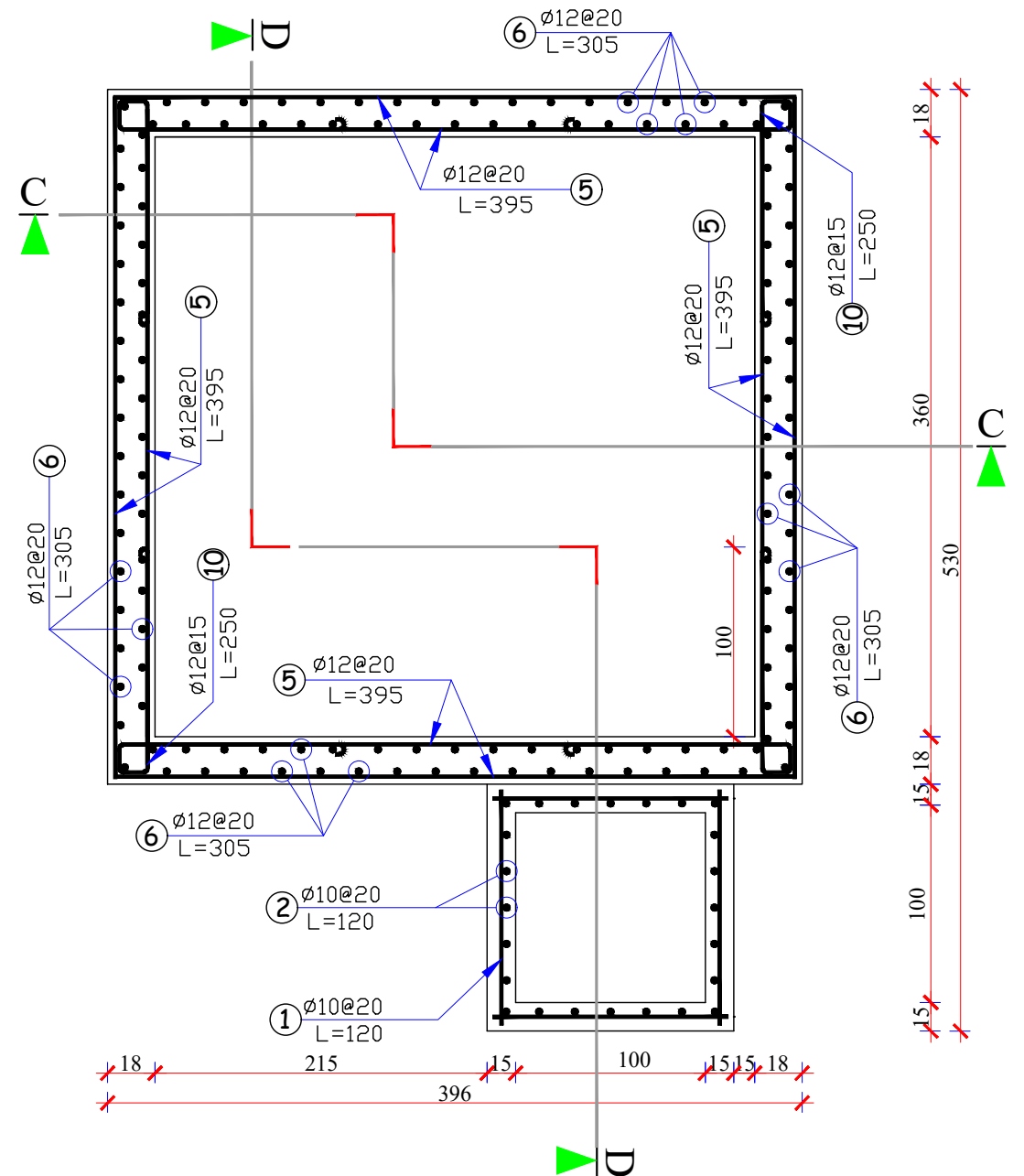
	SURVEYED BY	Engineering Team	CHECKED BY	Engineering Team	SCALE		SHEET NO. 3/11	PROVINCE	Baghlan	PROJECT NAME 30 Cubic meter RCC Water Reservoir-1
	DESIGNED BY	Sayed Hamidullah Hashemi	REVIEWED BY	Engineering Team	DATE	28-08-2025		DISTRICT	Doshi	
	DRAWN BY	Engineering Team	APPROVED BY	Engineering Team	DRAWING NO.			VILLAGE	Larkhab	DRAWING TITLE Section(A-A) and(B-B)



SECTION B-B

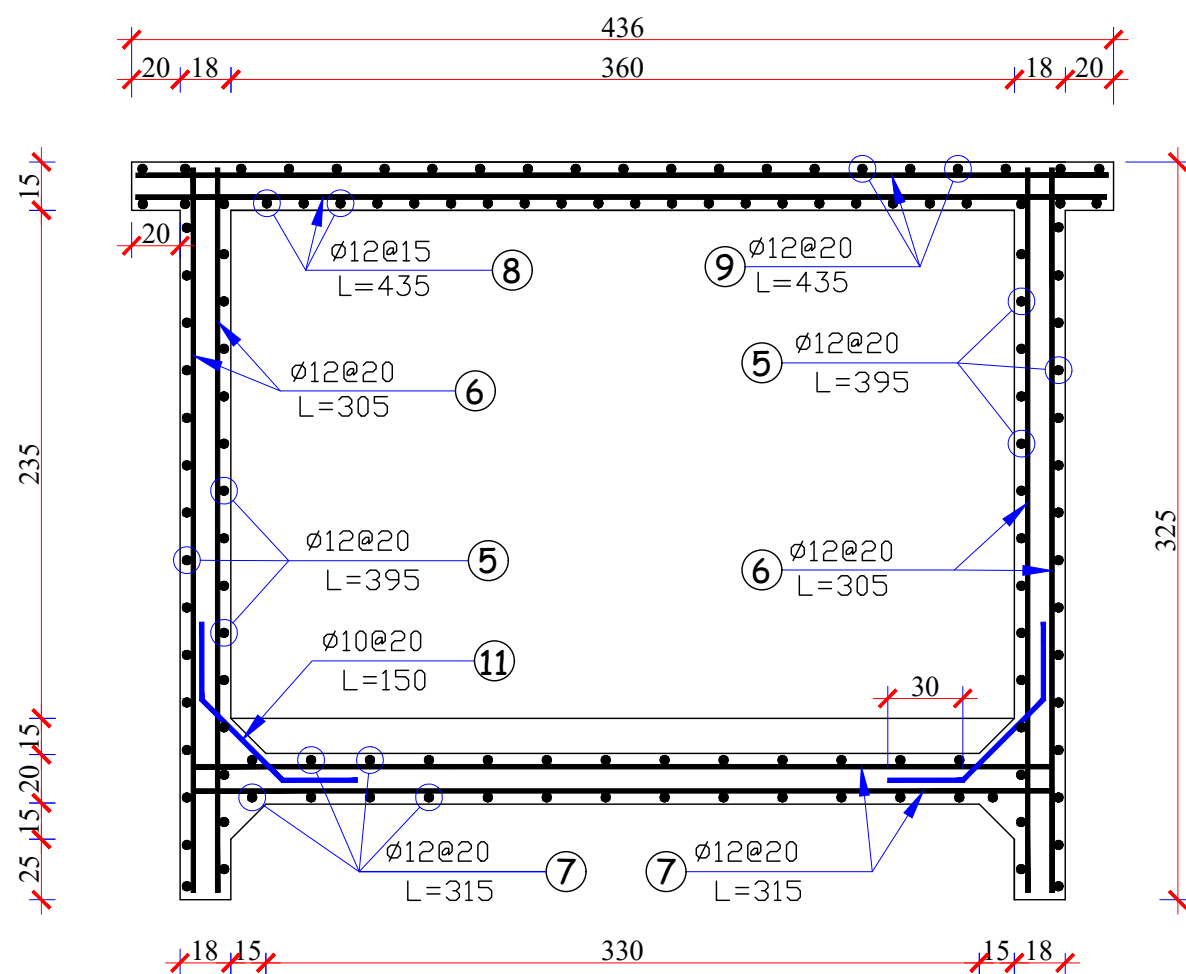
Steel Bar Schedule For 30Cubic Meters RCC Water Reservoir

Shape of Bar	Location of Bar	NO.	Dia (mm)	Number of bar	Length (m)	Total Length (m)	Weight (Kg/m)	Total Weight (Kg)	Total Weight +5% waste (Kg)
	Horizontal bar of Valve box wall	1	10	24	1.2	28.8	0.617	17.8	18.7
	Vertical bar of Valve box wall	2	10	28	1.2	33.6	0.617	20.7	21.7
	Valve box base	3	10	14	1.2	16.8	0.617	10.4	10.9
	Valve box cover	4	10	14	1.2	16.8	0.617	10.4	10.9
	Horizontal bar of Reservoir wall	5	12	136	3.95	537	0.888	477	501
	Vertical bar of Reservoir wall	6	12	160	3.05	488	0.888	434	456
	Reservoir base	7	12	80	3.95	316	0.888	281	295
	Lower net of Reservoir roof	8	12	60	4.35	261	0.888	232	243
	Upper net of Reservoir roof	9	12	44	4.35	191	0.888	170	179
	Corner of Reservoir walls	10	12	84	2.5	210	0.888	187	196
	Corner of Reservoir base	11	10	72	1.5	108	0.617	67	70
Diameter of Bar (mm)		Total Length +5% waste (m)				Total Weight +5% waste (Kg)			
10 mm		216m				133 Kg			
12 mm		2106m				1870Kg			

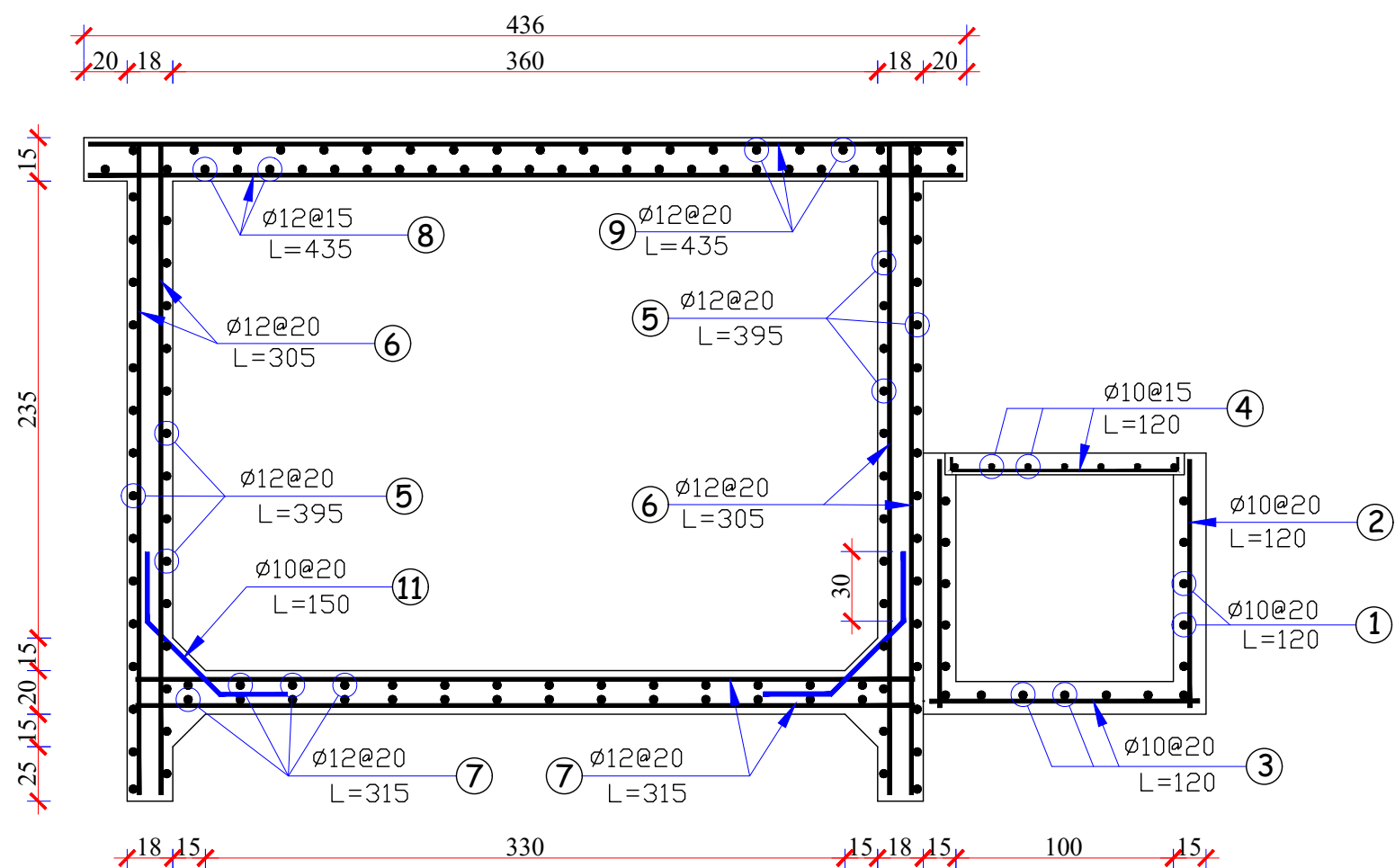


REINFORCEMENT PLAN


	SURVEYED BY	Engineering Team	CHECKED BY	Engineering Team	SCALE		SHEET NO. 4/11	PROVINCE	Baghlan	PROJECT NAME 30 Cubic meter RCC Water Reservoir-1
	DESIGNED BY	Sayed Hamidullah Hashemi	REVIEWED BY	Engineering Team	DATE	28-08-2025		DISTRICT	Doshi	
	DRAWN BY	Engineering Team	APPROVED BY	Engineering Team	DRAWING NO.			VILLAGE	Larkhab	DRAWING TITLE Reinforcement Plan ad Sec(C-C)

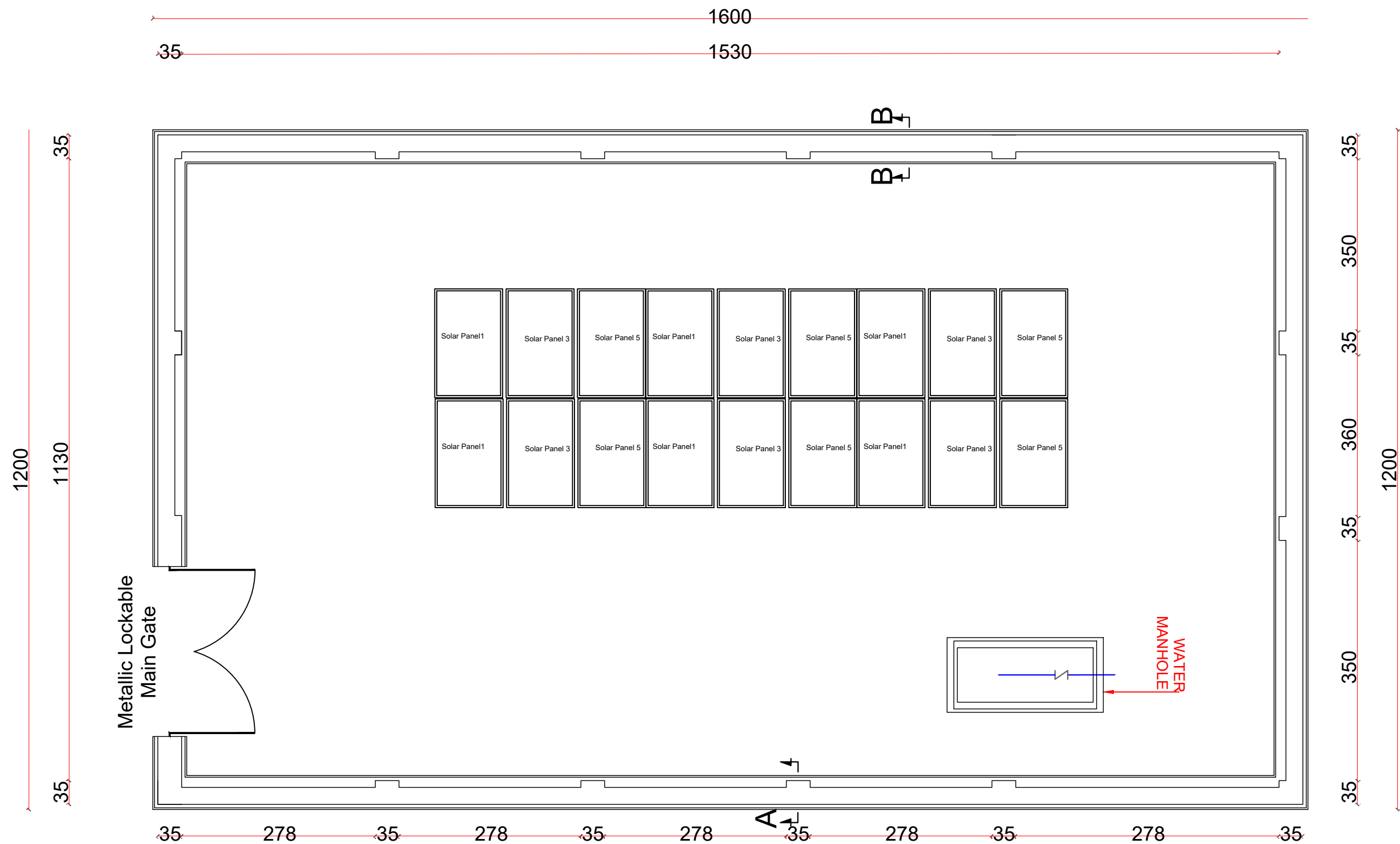


SECTION C-C



SECTION D-D



	SURVEYED BY	Engineering Team	CHECKED BY	Engineering Team	SCALE		SHEET NO. 5/11	PROVINCE	Baghlan	PROJECT NAME 30 Cubic meter RCC Water Reservoir-1 DRAWING TITLE Section D-D
	DESIGNED BY	Sayed Hamidullah Hashemi	REVIEWED BY	Engineering Team	DATE	28-08-2025		DISTRICT	Doshi	
	DRAWN BY	EngineeringTeam	APPROVED BY	Engineering Team	DRAWING NO.			VILLAGE	Larkhab	

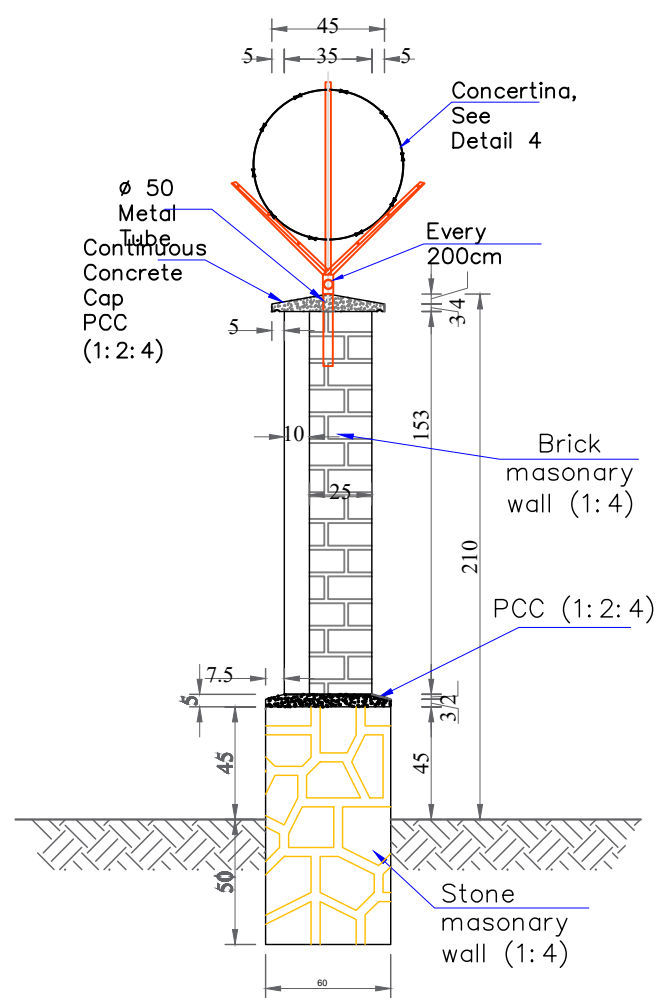


Note:

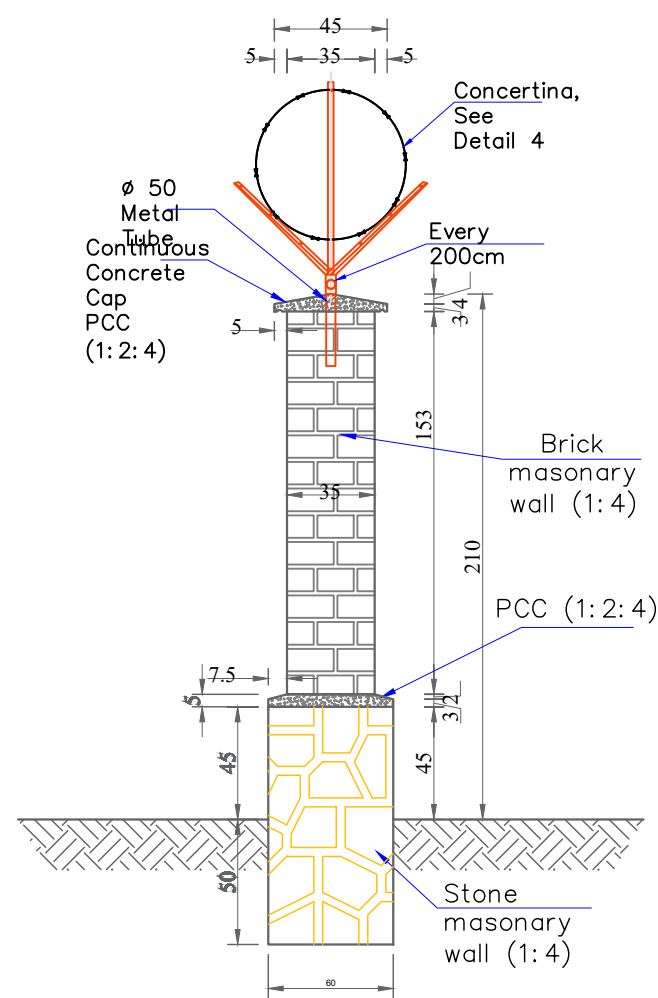
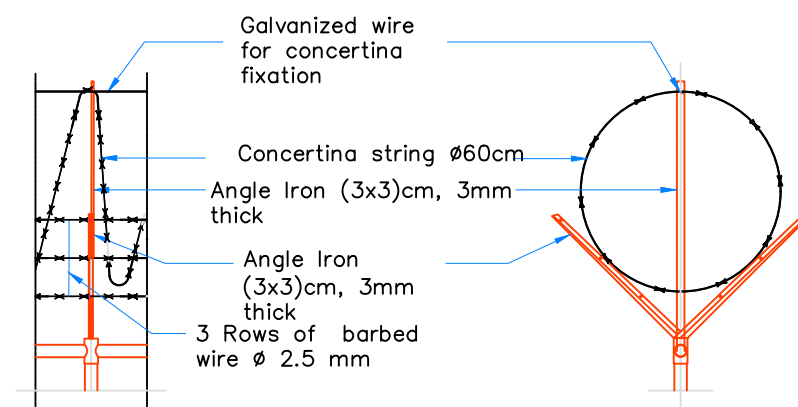
- 1- All dimensions are in cm unless otherwise stated.
- 2- During RCC work vibrator must be used to avoid.
- 3- All PCC works should be with M150(1:2:4) mortar unless otherwise stated.
- 4- All RCC works should be with M200(1:1.5:3) mortar unless otherwise stated.
- 5- Brick masonry (1:4).
- 6- Curing must be continued upto 28 days.
- 7- Clear and Clean water must be used every where.

Boundary wall Plan

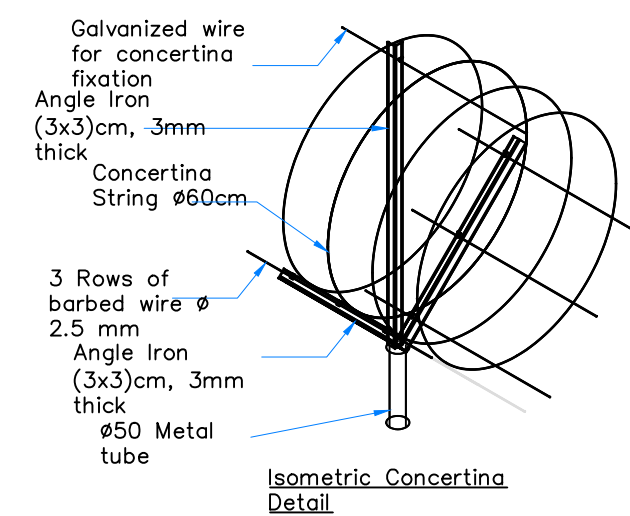
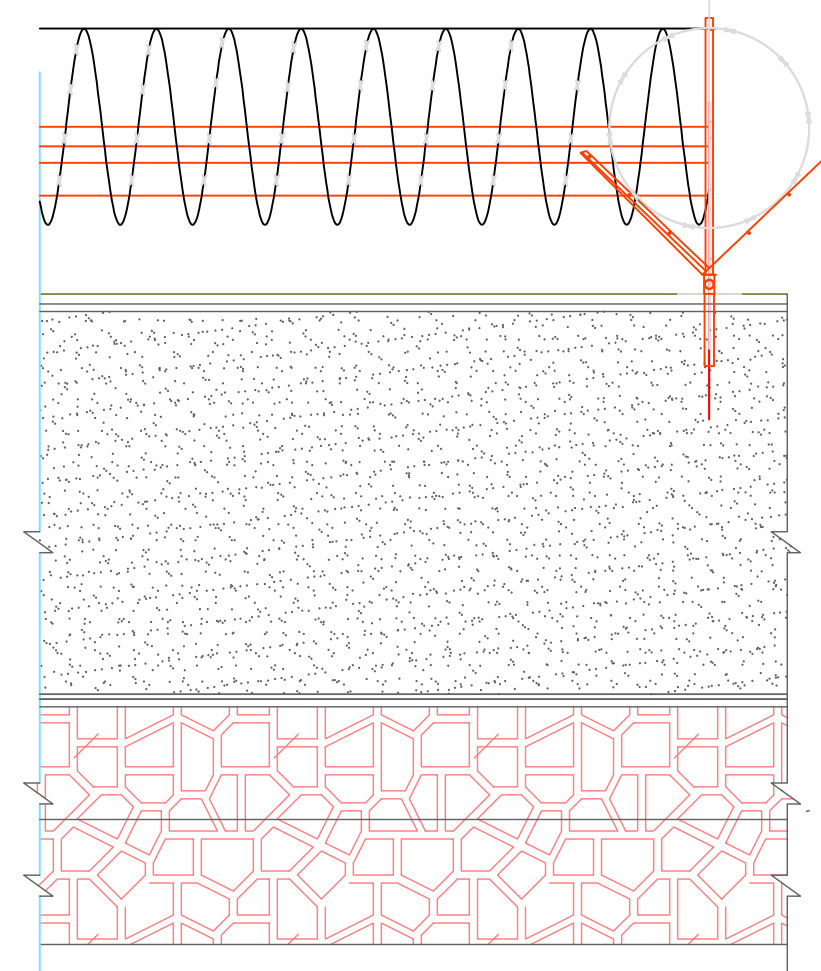
	SURVEYED BY	Engineering Team	CHECKED BY	Engineering Team	SCALE	SHEET NO. 	PROVINCE	Baghlan	PROJECT NAME 30 Cubic meter RCC Water Reservoir-1
	DESIGNED BY	Sayed Hamidullah Hashemi	REVIEWED BY	Engineering Team	DATE	28-08-2025	DISTRICT	Doshi	
	DRAWN BY	EngineeringTeam	APPROVED BY	Engineering Team	DRAWING NO.		VILLAGE	Larkhab	DRAWING TITLE Boundary wall Plan



Section B-B



Section A-A

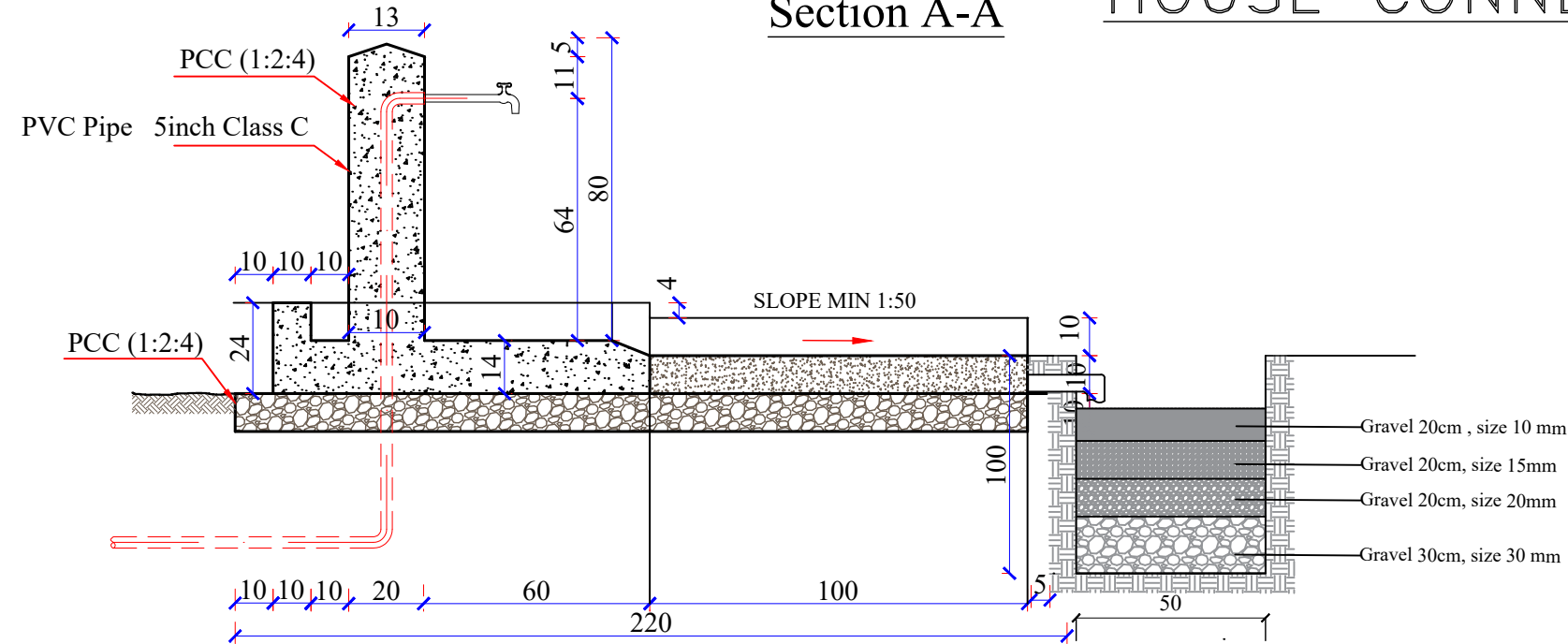


Isometric Concertina Detail

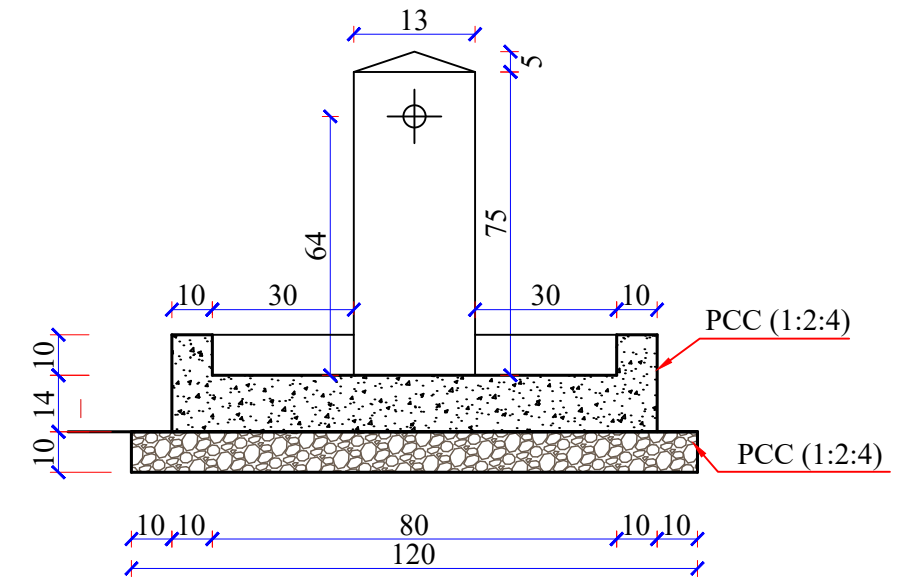
<div><div>ORCDG</div><div>Office of the Resident Engineer, Transportation</div></div>	SURVEYED BY	Engineering Team	CHECKED BY	Engineering Team	SCALE		SHEET NO. <div>7/11</div>	PROVINCE	Baghlan	PROJECT NAME 30 Cubic meter RCC Water Reservoir-1
	DESIGNED BY	Sayed Hamidullah Hashemi	REVIEWED BY	Engineering Team	DATE	28-08-2025		DISTRICT	Doshi	
	DRAWN BY	EngineeringTeam	APPROVED BY	Engineering Team	DRAWING NO.			VILLAGE	Larkhab	DRAWING TITLE Boundary Wall Section

HOUSE CONNECTION

Section A-A

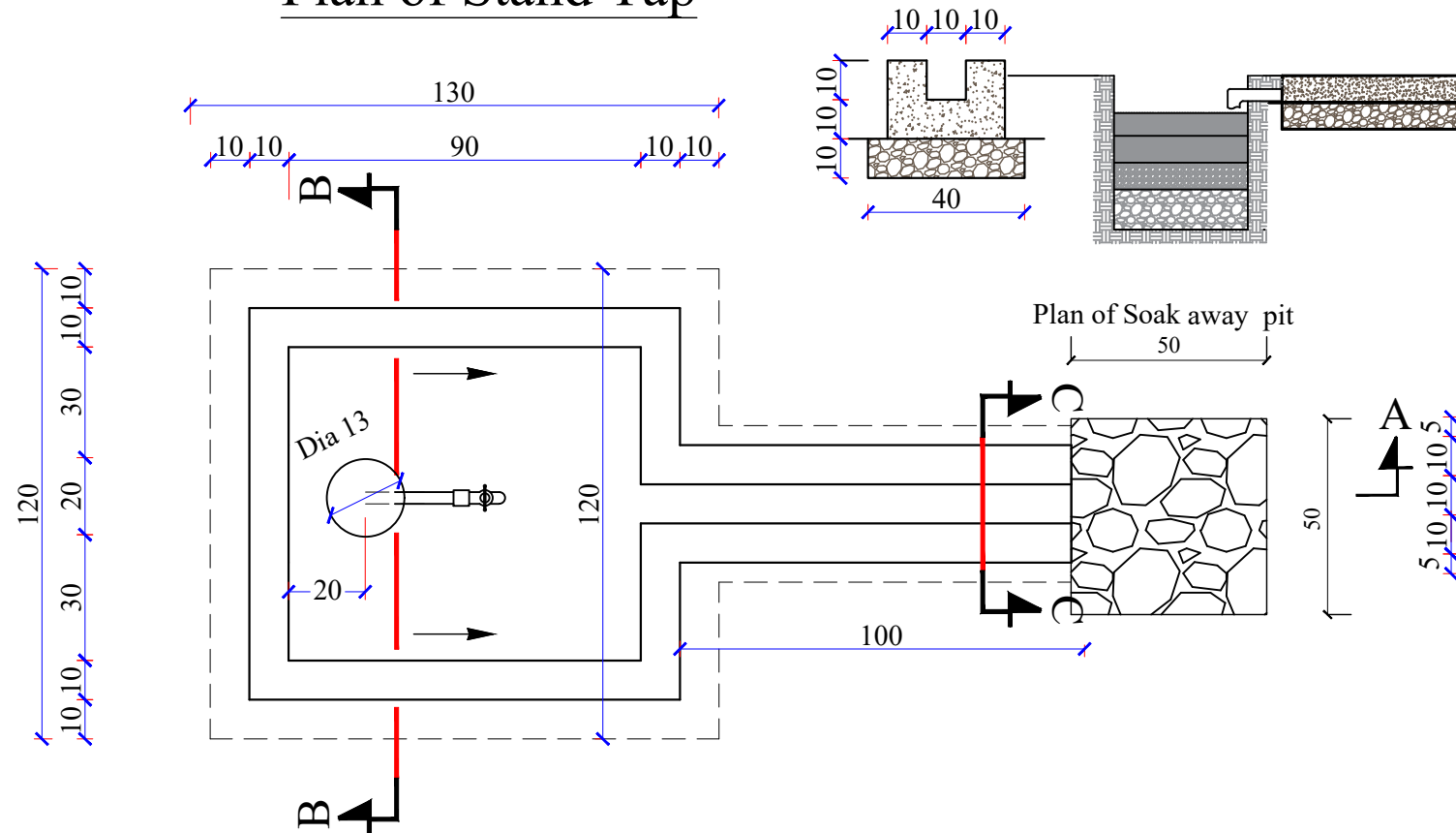


Section B-B

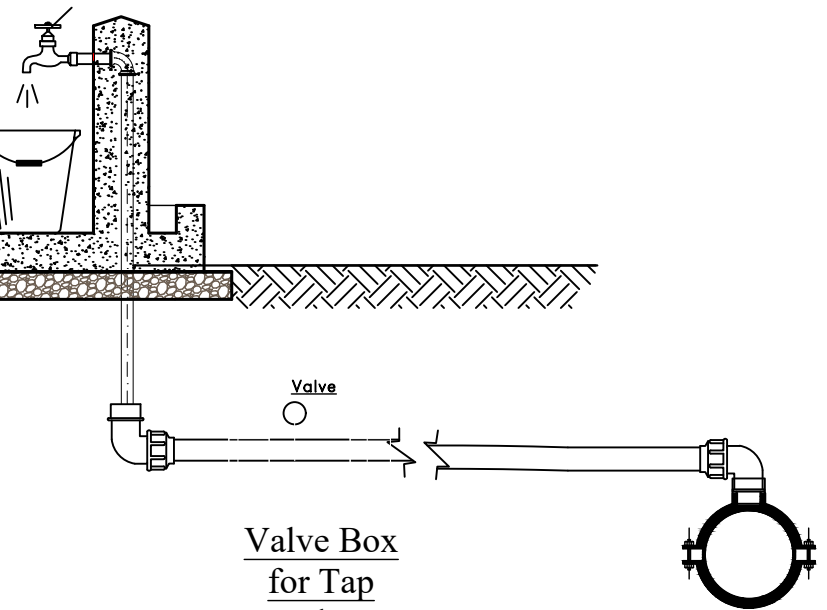
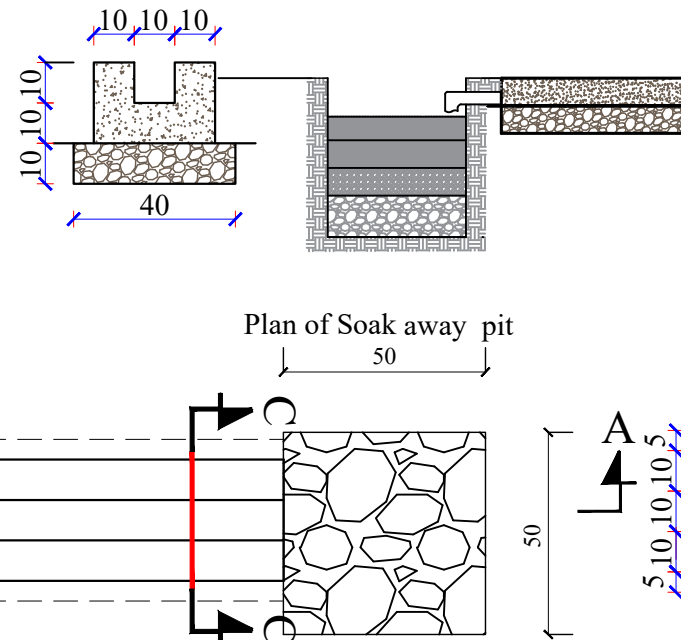


Section C-C

Plan of Stand Tap



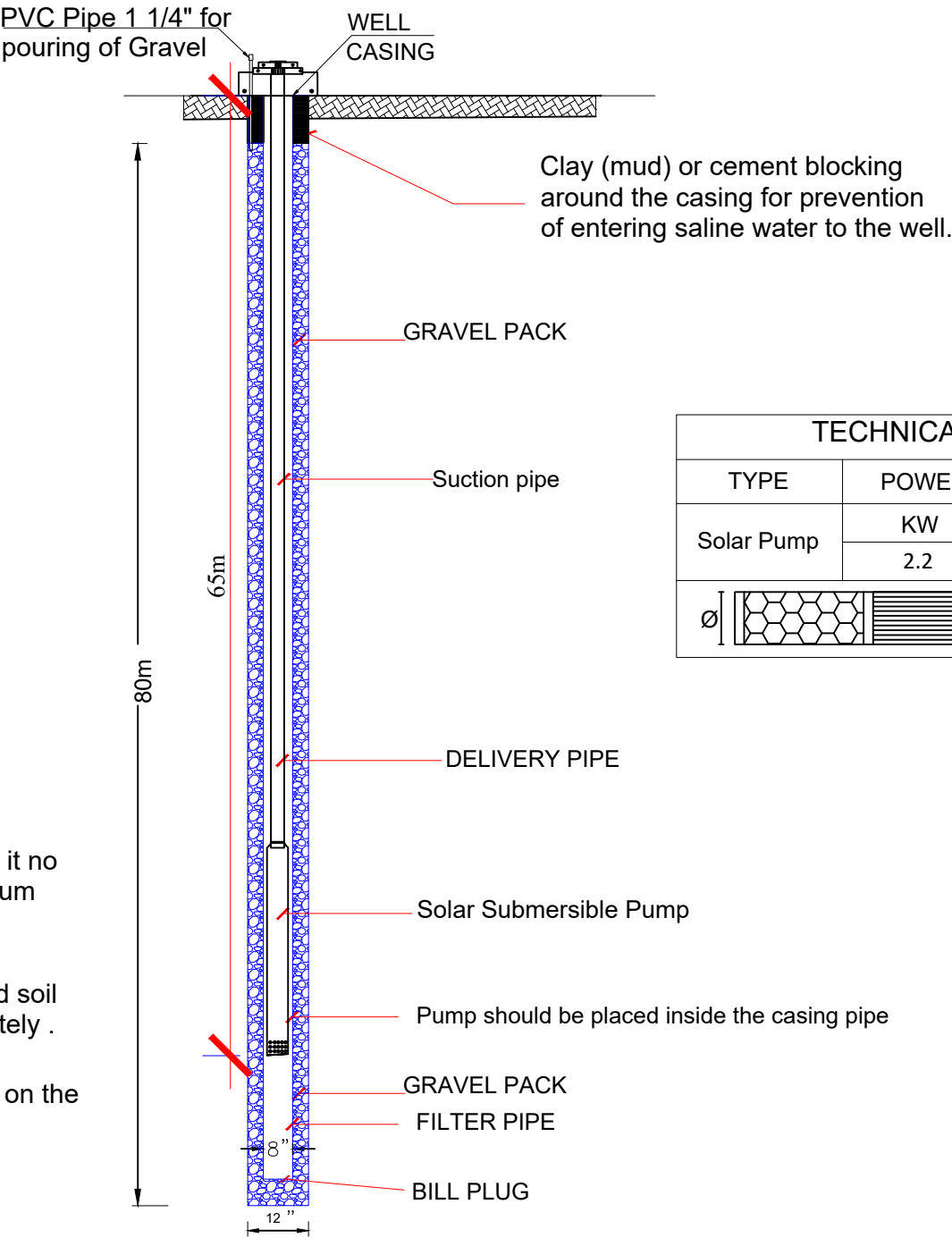
Plan of Soak away pit

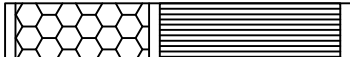


Valve Box
for Tap
valve

<div><div>ORCDG</div><div>Office of the Regional Council Development Group, Tashkent</div></div>	SURVEYED BY	Engineering Team	CHECKED BY	Engineering Team	SCALE		SHEET NO. <div>8/11</div>	PROVINCE	Baghlan	PROJECT NAME 30 Cubic meter RCC Water Reservoir-1
	DESIGNED BY	Sayed Hamidullah Hashemi	REVIEWED BY	Engineering Team	DATE	28-08-2025		DISTRICT	Doshi	
	DRAWN BY	EngineeringTeam	APPROVED BY	Engineering Team	DRAWING NO.			VILLAGE	Larkhab	DRAWING TITLE House connection Taps



WELL SECTION



TECHNICAL INFORMATION PUMP				
Solar Pump	TYPE	POWER	Flow Rate L/s	1.44
		KW	Flow Rate M3/day	40.4
		2.2	H (METER)	86
 DN	DN	Ø		
	1 1/2"	2.0"		

Notes

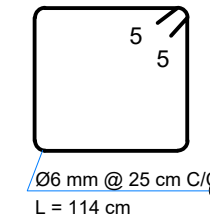
- 1-Well designed by MRRD.
- 2- If the ground stratum are made of bed rocks it no need for installation of casing pipes. if the stratum are made of Loss soil it should be stablized by installation casing pipes.
- 3-Each drilled strata depth should be noted and soil sample should be kept in a sample box separately .
- 4-Pump test at least 8 hours.
- 5-the depth of filter pipe has considered based on the previous experience . the true depth will be determined after well practical drilling.

	SURVEYED BY	Engineering Team	CHECKED BY	Engineering Team	SCALE		SHEET NO. 	PROVINCE	Baghlan	PROJECT NAME 30 Cubic meter RCC Water Reservoir-1	
	DESIGNED BY	Sayed Hamidullah Hashemi	REVIEWED BY	Engineering Team	DATE	28-08-2025		DISTRICT	Doshi	DRAWING TITLE	
	DRAWN BY	EngineeringTeam	APPROVED BY	Engineering Team	DRAWING NO.			VILLAGE	Larkhab	Well Section	

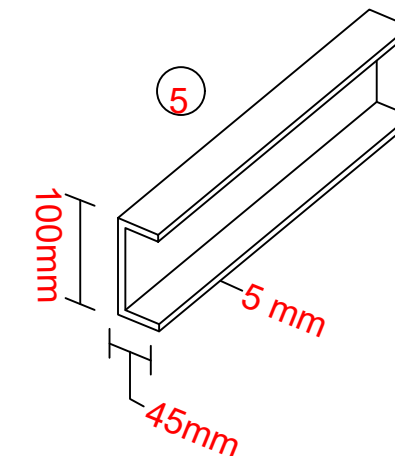
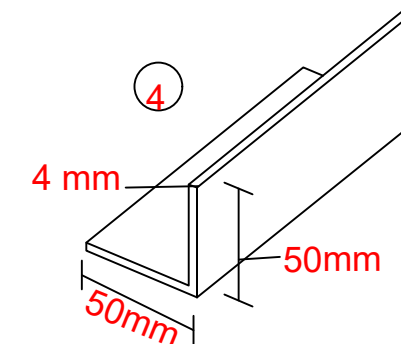
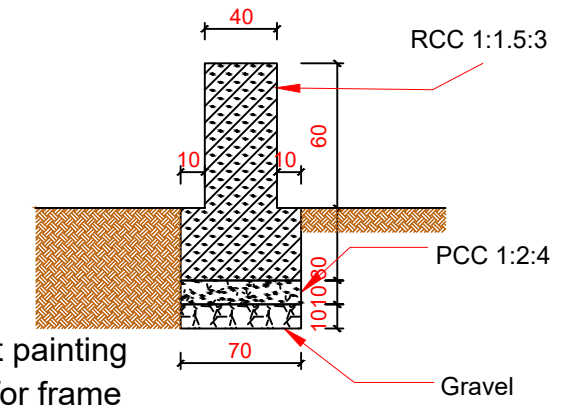
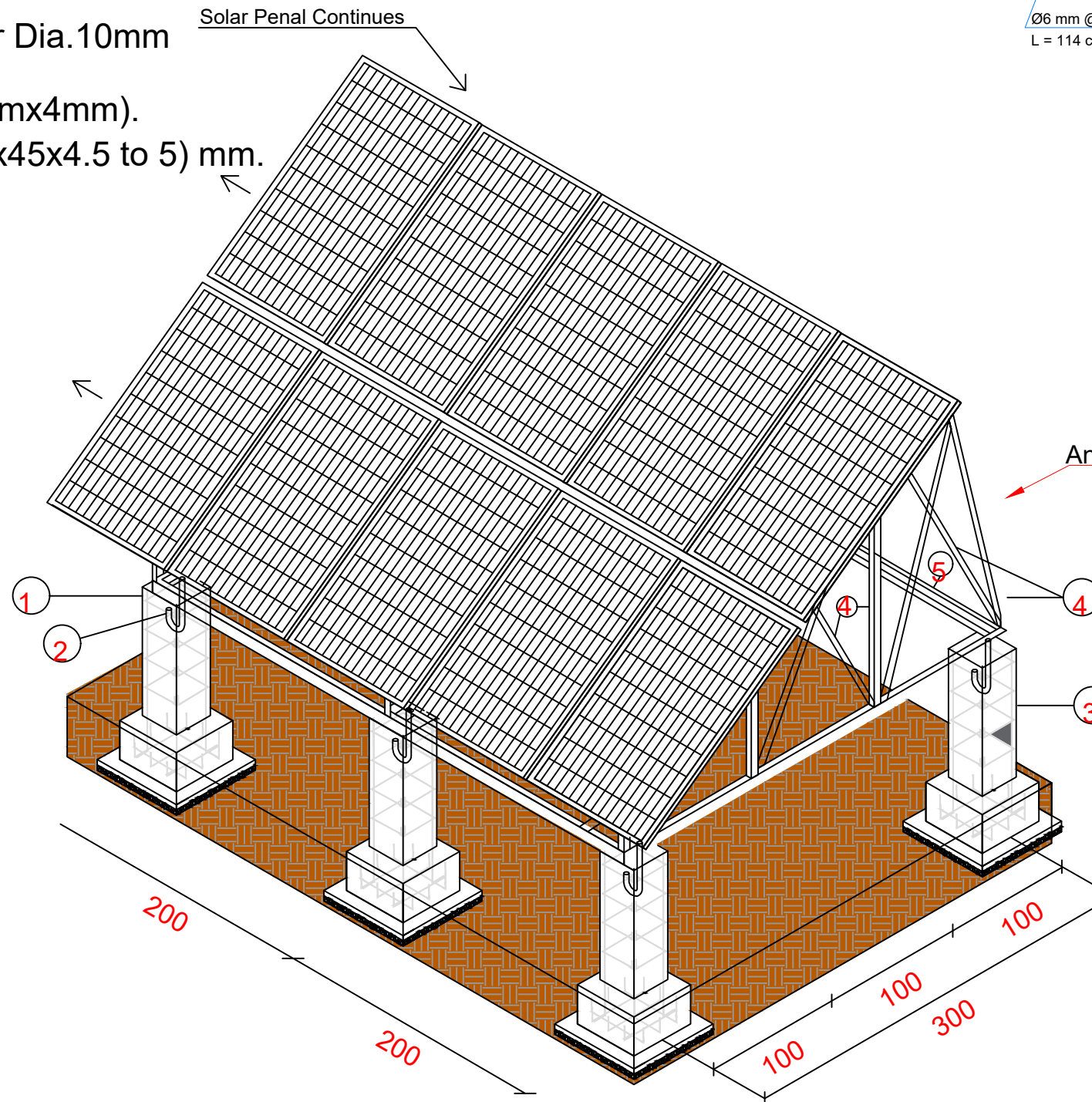
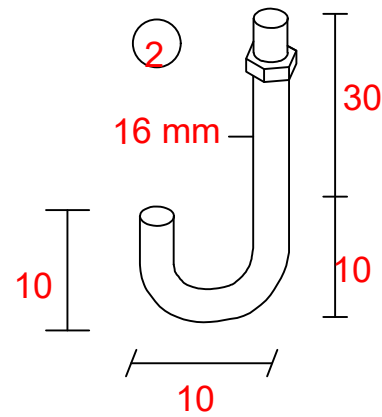
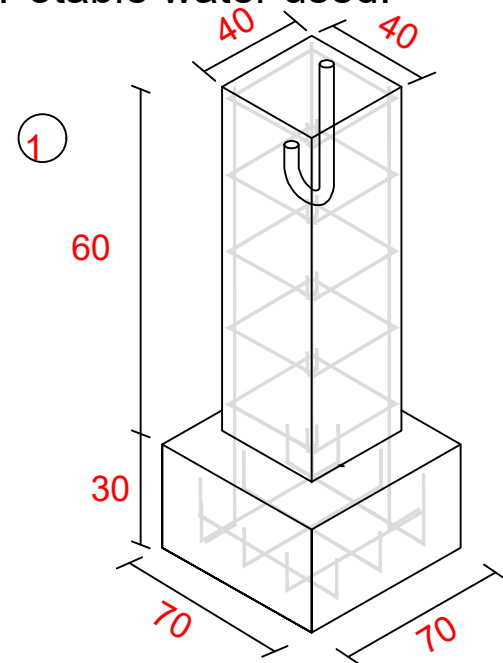
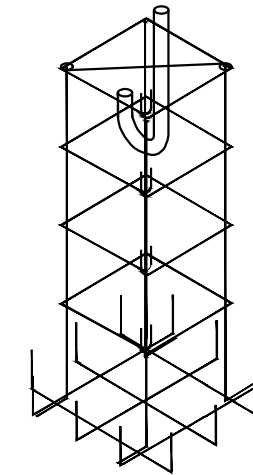
Note:

- 1- No. of Solar panels 4860 watt
- 2 -RCC Concrete Footing and Column M(1:1.5:3).
- 3 -J-Anchor Bolt 16mm.
- 4 -Deformed Grade 60 steel bar Dia.10mm according to drawing.
- 5 -Steel angle iron (50mmx50mmx4mm).
- 6 -Steel girder mini. sizing (100x45x4.5 to 5) mm.
- PCC M(1:2:4).
- 7 -Foundation Compacted 95%.
- 8 -Potable water used.

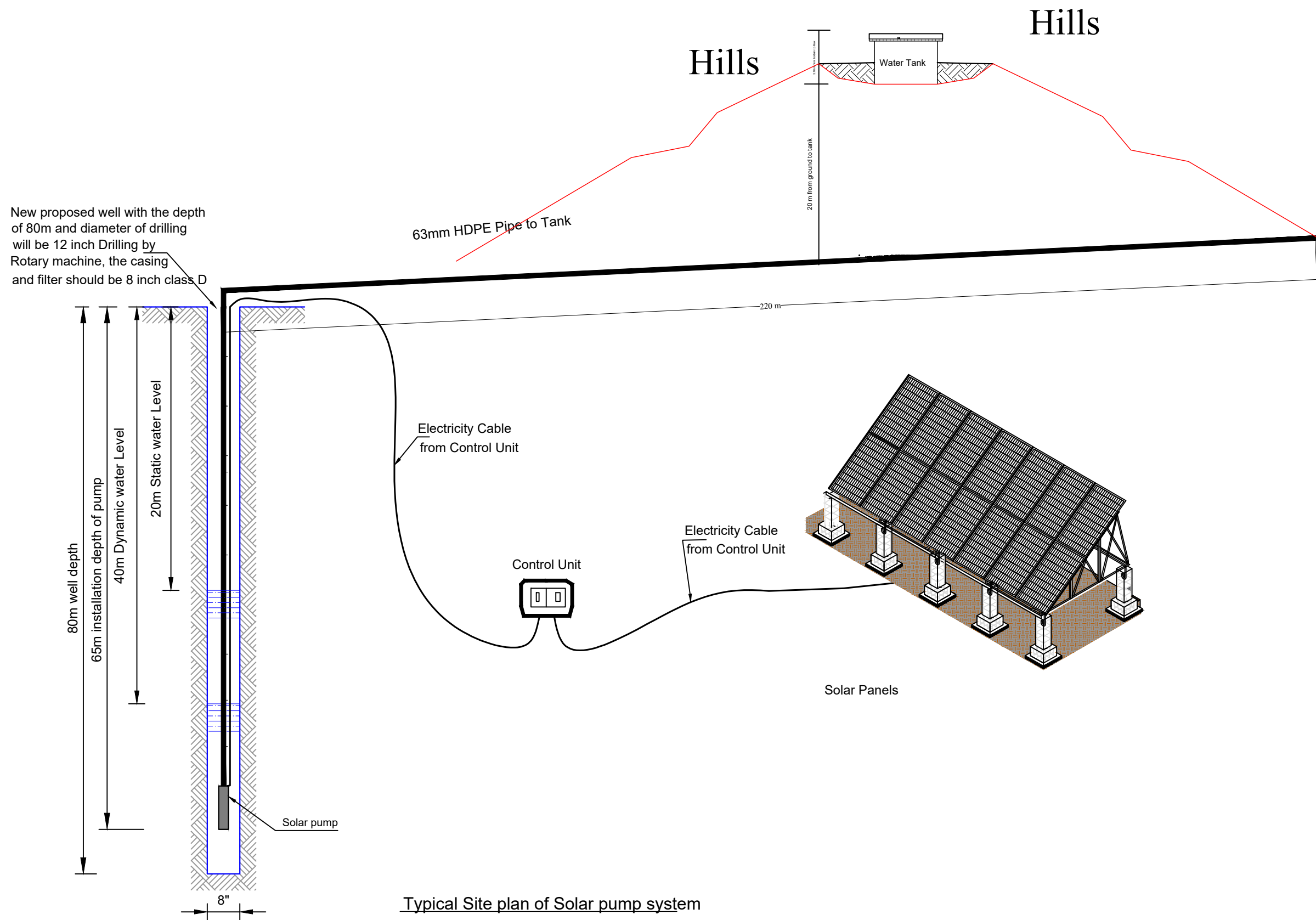
Column Stirrup



3



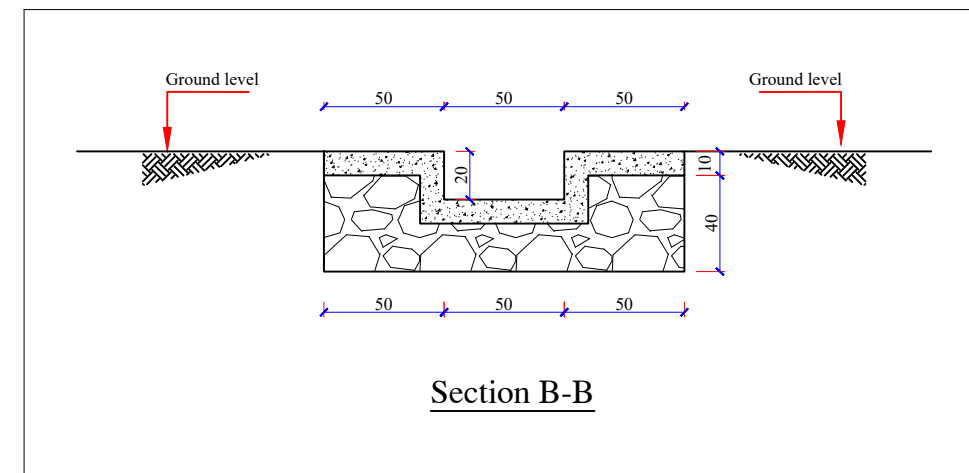
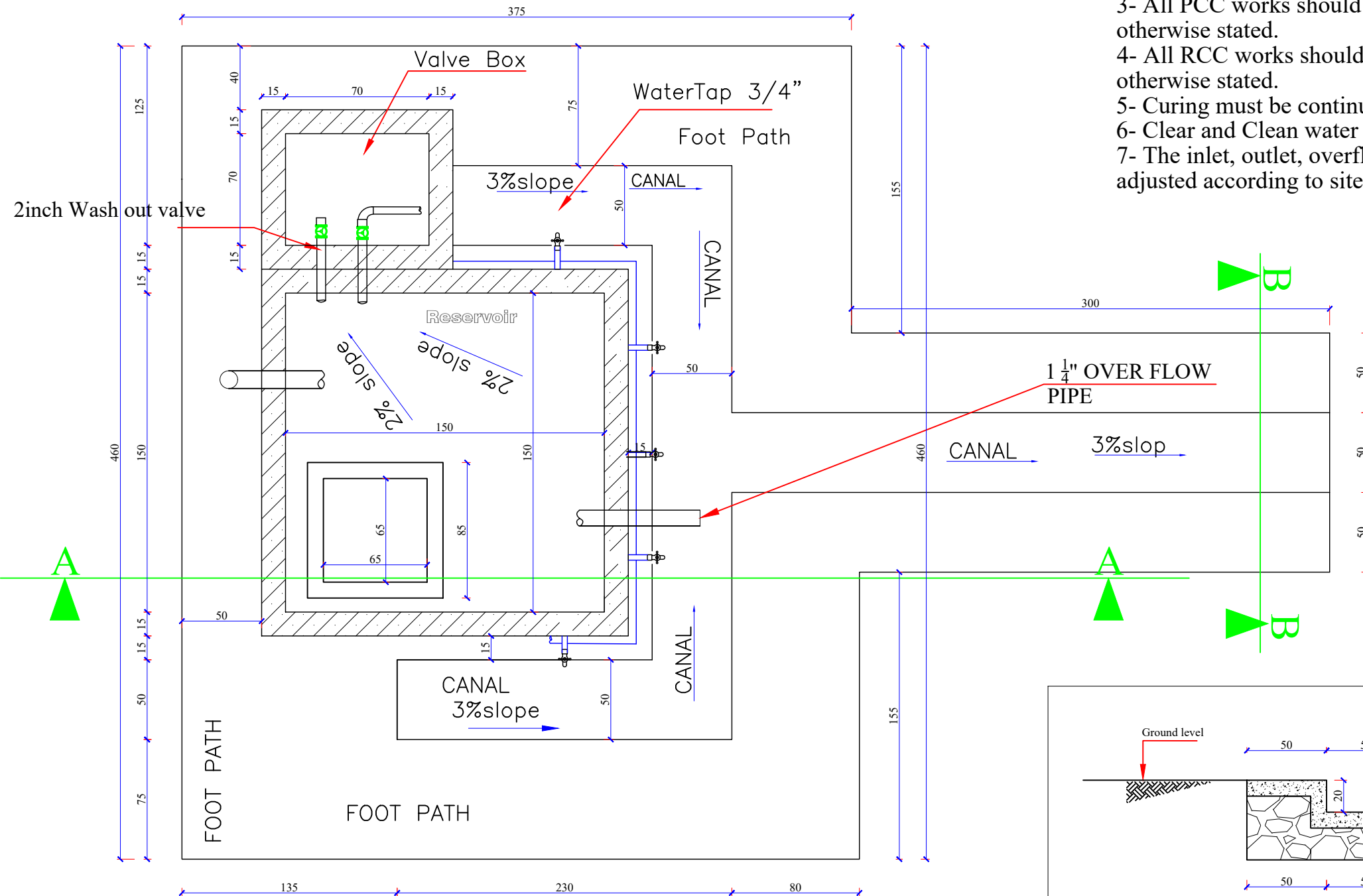
	SURVEYED BY	Engineering Team	CHECKED BY	Engineering Team	SCALE		SHEET NO. 10/11	PROVINCE	Baghlan	PROJECT NAME 30 Cubic meter RCC Water Reservoir-1
	DESIGNED BY	Sayed Hamidullah Hashemi	REVIEWED BY	Engineering Team	DATE	28-08-2025		DISTRICT	Doshi	
	DRAWN BY	EngineeringTeam	APPROVED BY	Engineering Team	DRAWING NO.			VILLAGE	Larkhab	



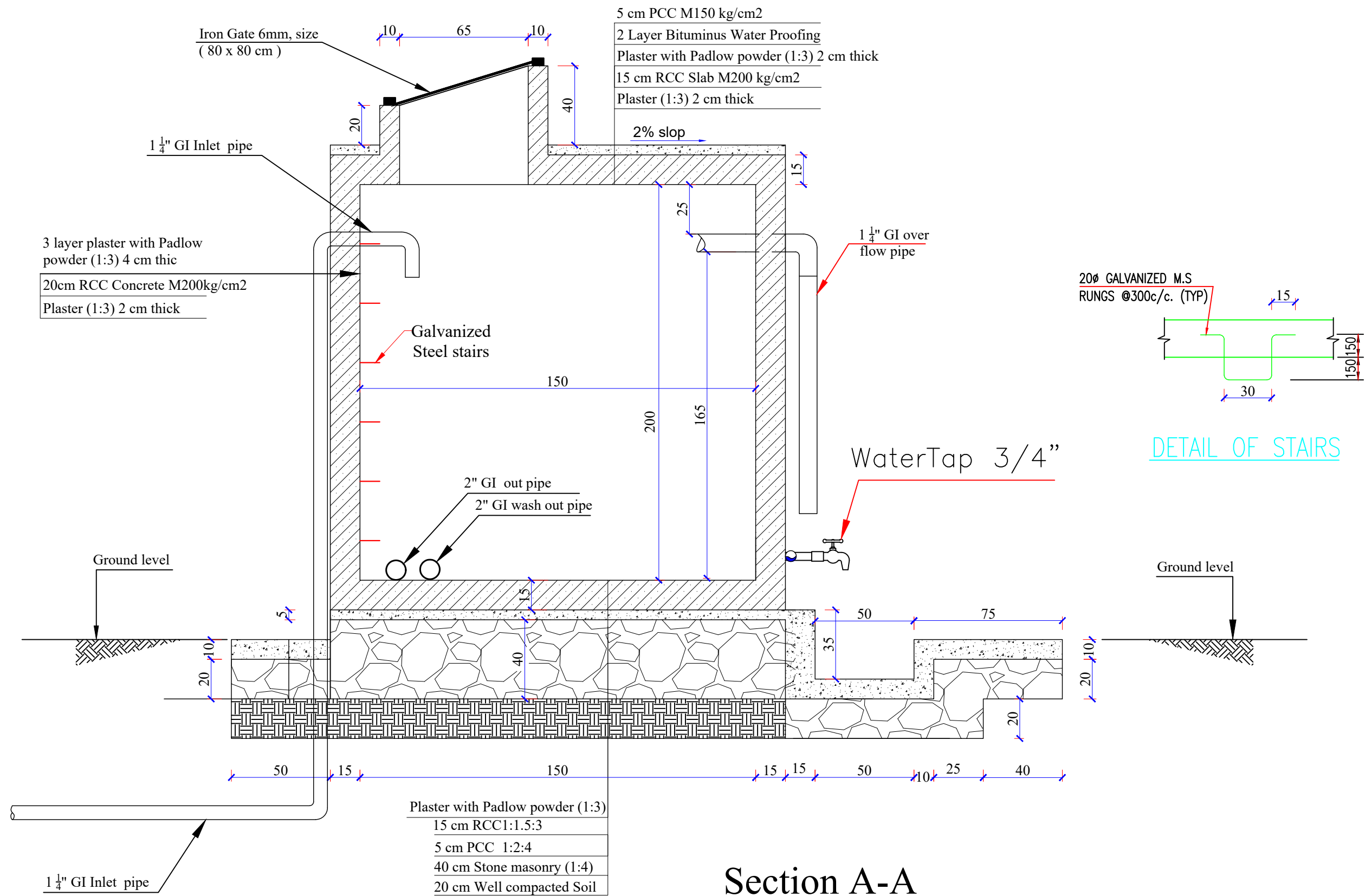
<div>Logo of ORCDG (Office of Rural Community Development Group)</div>	<div>ORCDG</div>	SURVEYED BY	Engineering Team	CHECKED BY	Engineering Team	SCALE		SHEET NO. <div>11/11</div>	PROVINCE	Baghlan	PROJECT NAME	30 Cubic meter RCC Water Reservoir-1
		DESIGNED BY	Sayed Hamidullah Hashemi	REVIEWED BY	Engineering Team	DATE	28-08-2025		DISTRICT	Doshi		
		DRAWN BY	EngineeringTeam	APPROVED BY	Engineering Team	DRAWING NO.			VILLAGE	Larkhab	Plan For Solar	



Note:

- 1- All dimensions are in cm unless otherwise stated.
- 2- During RCC work vibrator must be used to avoid water leakage from reservoir.
- 3- All PCC works should be with 1:2:4 mortar unless otherwise stated.
- 4- All RCC works should be with 1:1.5:3 mortar unless otherwise stated.
- 5- Curing must be continued upto 28 days.
- 6- Clear and Clean water must be used every where.
- 7- The inlet, outlet, overflow and washing pipes should be adjusted according to site condition.

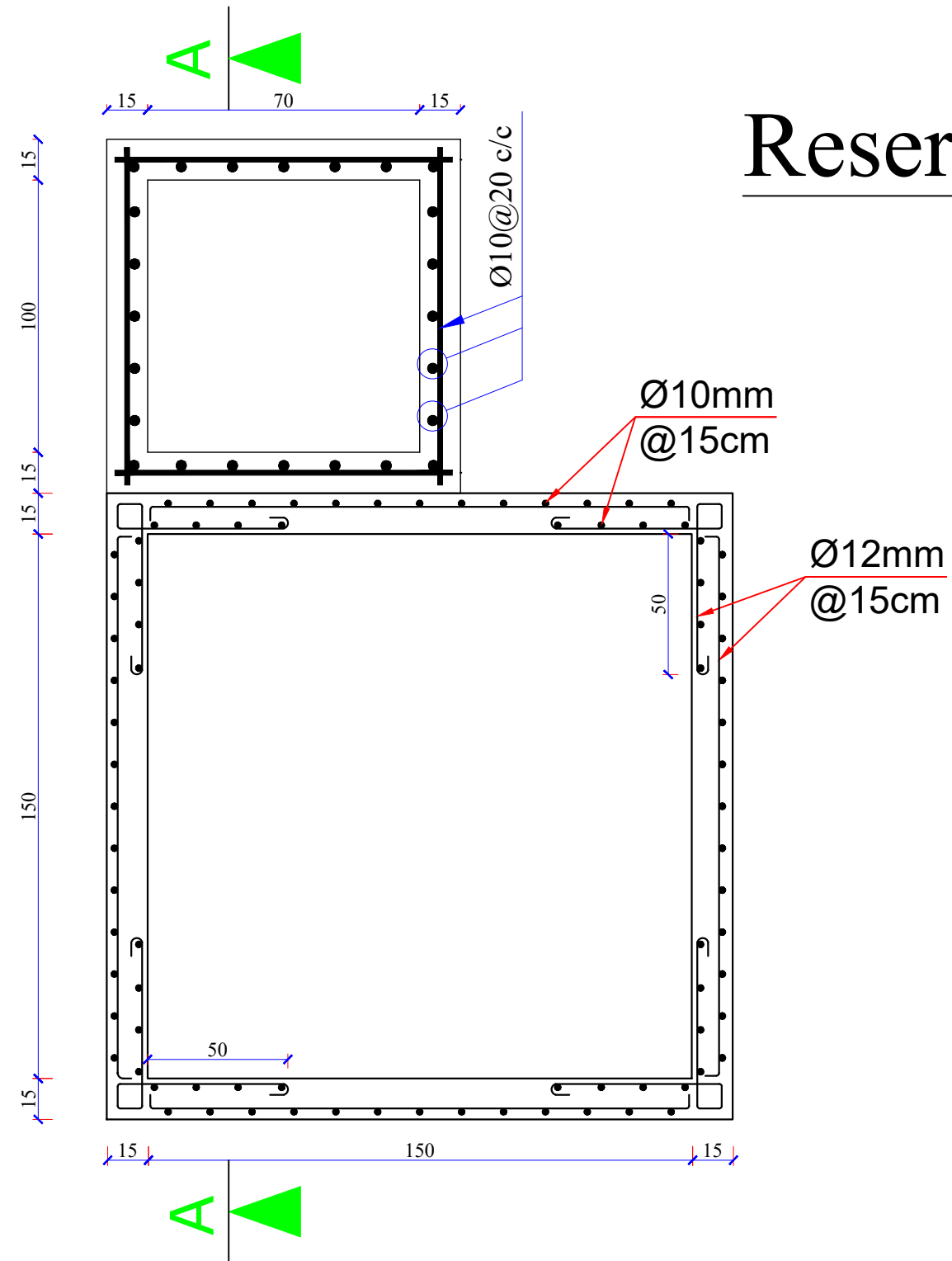


		SURVEYED BY	Engineering Team	CHECKED BY	Engineering Team	SCALE		SHEET NO.	PROVINCE	Baghlan	PROJECT NAME 30 Cubic meter RCC Water Reservoir-1
		DESIGNED BY	Sayed Hamidullah Hashemi	REVIEWED BY	Engineering Team	DATE	28-08-2025		DISTRICT	Doshi	
		DRAWN BY	EngineeringTeam	APPROVED BY	Engineering Team	DRAWING NO.			VILLAGE	Larkhab	
										DRAWING TITLE 5m3 Drinking WR fro School	

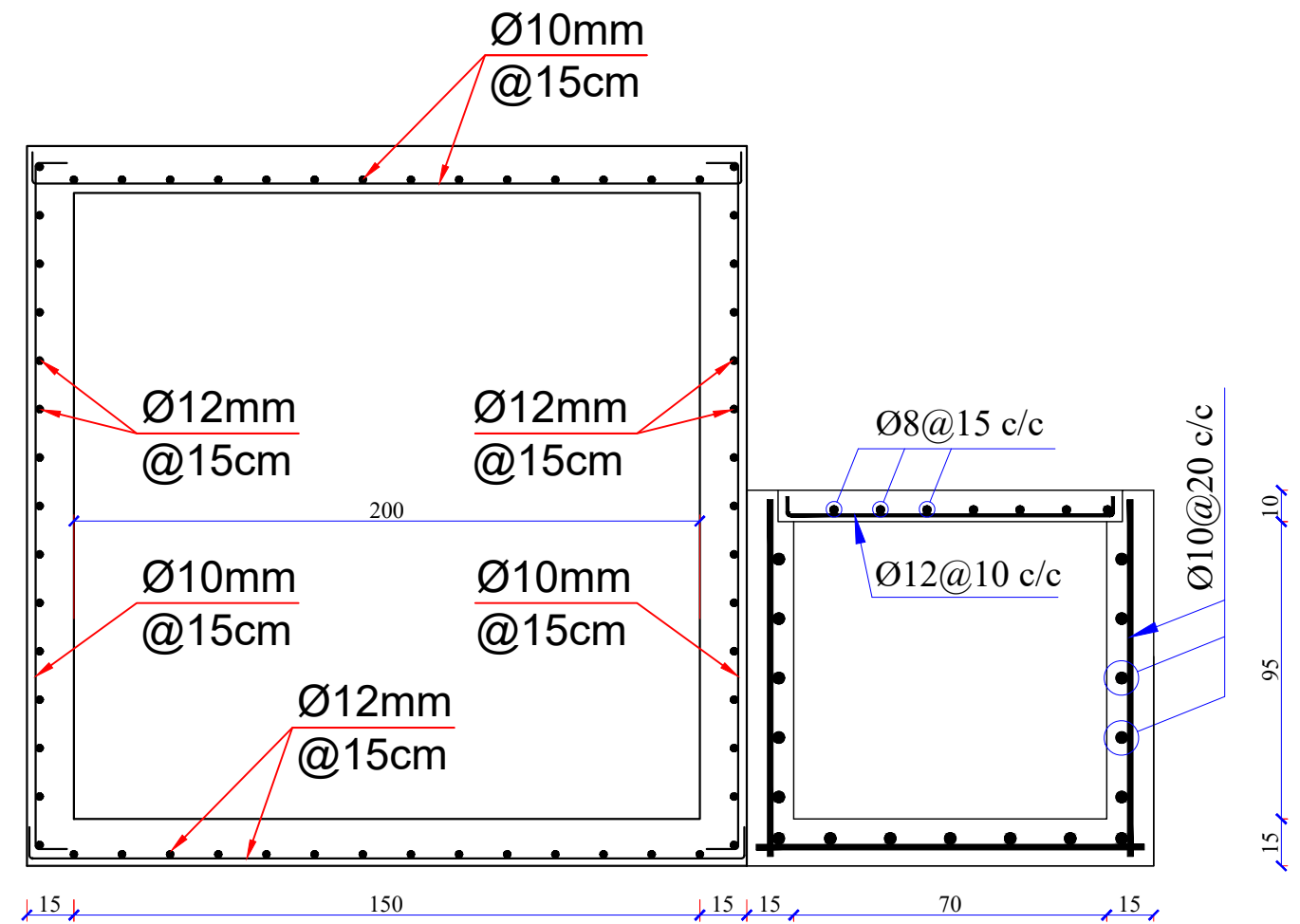


<div>Logo of ORCDG</div>		SURVEYED BY	Engineering Team	CHECKED BY	Engineering Team	SCALE		SHEET NO. 	PROVINCE	Baghlan	PROJECT NAME 30 Cubic meter RCC Water Reservoir-1
		DESIGNED BY	Sayed Hamidullah Hashemi	REVIEWED BY	Engineering Team	DATE	28-08-2025		DISTRICT	Doshi	
		DRAWN BY	EngineeringTeam	APPROVED BY	Engineering Team	DRAWING NO.				VILLAGE	Larkhab

Reservoir Reinforcement



Reinforcement Plan
of Reservoir



Section A-A

	SURVEYED BY	Engineering Team	CHECKED BY	Engineering Team	SCALE		SHEET NO.	PROVINCE	Baghlan	PROJECT NAME	30 Cubic meter RCC Water Reservoir-1
	DESIGNED BY	Sayed Hamidullah Hashemi	REVIEWED BY	Engineering Team	DATE	28-08-2025		DISTRICT	Doshi		
	DRAWN BY	EngineeringTeam	APPROVED BY	Engineering Team	DRAWING NO.			VILLAGE	Larkhab	DRAWING TITLE	Reinforcement plan